

Piano

Saturnia

Unto Mononen

tango ♩ = 120

Vln.

mf

4

Vla.

f

9

f

14

V.S.

19

Vc.

mf

Measures 19-24. The system includes a vocal line (Vc.) and a piano accompaniment. The piano part features a steady eighth-note bass line in the left hand and chords in the right hand. Dynamics include *mf* and accents.

25

f *mf*

Measures 25-29. The system includes a vocal line and a piano accompaniment. The piano part features a steady eighth-note bass line in the left hand and chords in the right hand. Dynamics include *f* and *mf*.

30

Vln.

f *mf*

Measures 30-34. The system includes a violin line (Vln.) and a piano accompaniment. The piano part features a steady eighth-note bass line in the left hand and chords in the right hand. Dynamics include *f* and *mf*.

35

f *mf*

Measures 35-39. The system includes a vocal line and a piano accompaniment. The piano part features a steady eighth-note bass line in the left hand and chords in the right hand. Dynamics include *f* and *mf*.

39

Measures 39-42 of a piano piece. The right hand features a melodic line with eighth and sixteenth notes, including a triplet in measure 40. The left hand provides a harmonic accompaniment with chords and single notes. Dynamic markings include *f* and *sempre f* with accents.

43

Measures 43-46 of a piano piece. The right hand continues the melodic development with a triplet in measure 43. The left hand features a more active bass line with eighth notes and chords. Dynamic markings include *f* and *sempre f* with accents.

47

Measures 47-50 of a piano piece. The right hand has a melodic line with eighth notes and a triplet in measure 48. The left hand features a steady accompaniment of chords and eighth notes. Dynamic markings include *f* and *sempre f* with accents.

50

Measures 51-54 of a piano piece. The right hand features a melodic line with eighth notes and a triplet in measure 51. The left hand provides a harmonic accompaniment with chords and single notes. Dynamic markings include *f* and *sempre f* with accents.

53

Vc.

mf

Measures 53-56. The system includes a Violoncello (Vc.) line and a grand piano (piano) section with treble and bass staves. The key signature has four flats (B-flat, E-flat, A-flat, D-flat). The piano part features a melodic line in the right hand and a harmonic accompaniment in the left hand. The Vc. part has a melodic line. The piano part starts with a mezzo-forte (*mf*) dynamic marking.

57

Vln.

Measures 57-60. The system includes a Violoncello (Vc.) line and a grand piano (piano) section with treble and bass staves. The key signature has four flats (B-flat, E-flat, A-flat, D-flat). The piano part features a melodic line in the right hand and a harmonic accompaniment in the left hand. The Vc. part has a melodic line. The piano part starts with a mezzo-forte (*mf*) dynamic marking.

61 Vc.

mf f

65 Vln.

mf f

69 Vln.

mf f mf

75 Vla.

mf f

80

Vln.

f

85

f *pp*

Satunmaa

Violin 1

Unto Mononen

tango ♩ = 120

4

10

16

21

27

32

37

41

44

mf

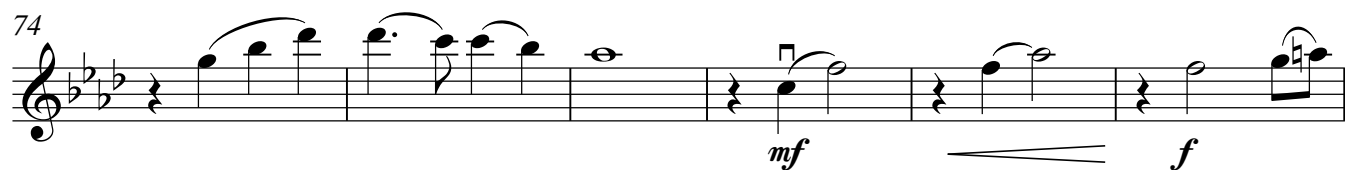
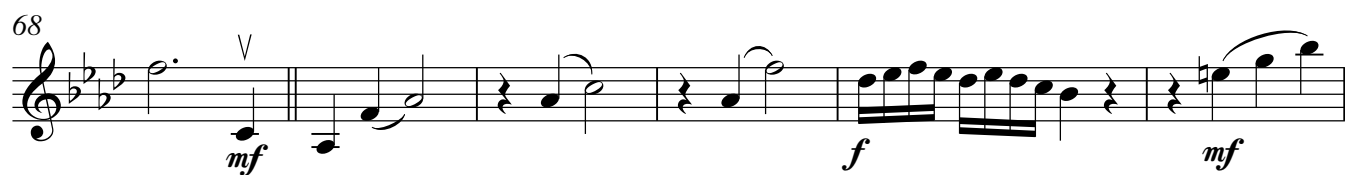
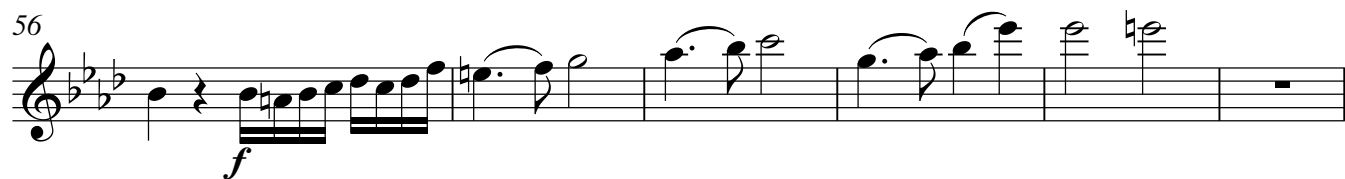
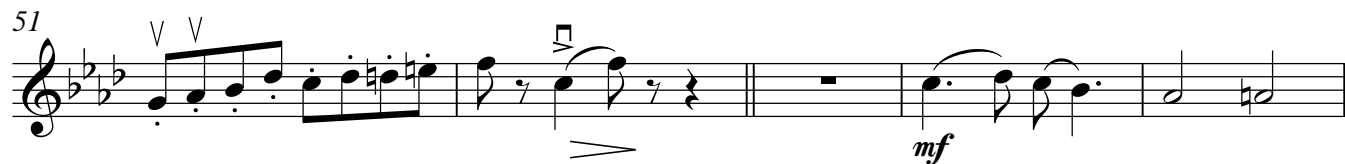
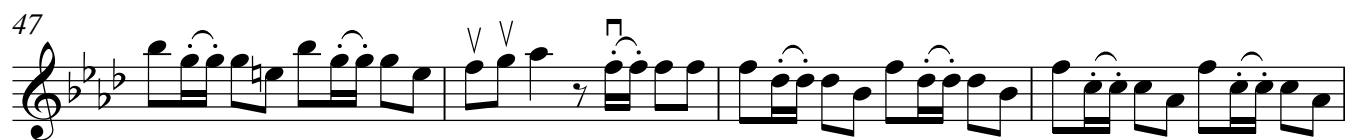
f

mp

mf

f

3 3



tango ♩ = 120

mf

4

f

9

mf *f*

15

pizz. (drum)

21

arco *mp*

27

f *mf*

32

f *mf*

37

f

41

3 3

45

f

49

V V

53

mf *f*

58

mf

64

mf V

69

mf V

75

f V *mf* V

80

V *mf* *f* *f*

85

p *mp* *pp*

Viola

Satumaa

Unto Mononen

tango ♩ = 120

Vln. Play

mf

6

f *mf*

12

f

17

arco

mp

23

f

29

mf *f* *mf*

35

f *mf* *f* *mf*

40

f *sempre f*

46

50

V.S.

53 *mf* *sim.* *f* *sim.*

59 *mf* *legato* *f*

64 *f* *mf*

69 *arco* *f* *mf*

75 *f* *mf* *f*

80 *f*

85 *2* *pizz.* *p* *p* *pp*

Violoncello

Satumaa

Unto Mononen

tango ♩ = 120

Vln. Play

mf

5

f *mf*

11

f

17

mf

23

28

f *mf* *f* *mf*

33

f

37

mf *f* *mf* *f* *sempre f*

43

48

53 *mf* *f* *sim.*

59 *mf*

64 *f* *mf*

69 *mf*

75 *f* *mf* *f*

80 *f*

85 **2** *pizz.* *p* *p* *pp*

Contrabass

Saturnia

Unto Mononen

tango ♩ = 120

Vln.

arco

mf

5 pizz.

arco

pizz.

f

mf

11

f

16 arco pizz.

arco pizz.

mf

22

28 arco pizz.

f

mf

f

mf

33

f

37 pizz.

arco

pizz.

arco

pizz.

mf

f

mf

f

sempre f

42

arco

47 pizz.

arco

52 pizz. *mf* *f*

58 sim. *mf*

63 arco pizz. *f* arco

69 pizz. *mf* *mf*

75 arco pizz. *f* *mf* *f*

80 arco *f*

85 3 pizz. *p* *pp*

Detailed description of the musical score: The score is written for a Contrabass instrument. It consists of seven staves of music, numbered 52 to 85. The key signature is three flats (B-flat, E-flat, A-flat). The time signature is not explicitly shown but appears to be 4/4 based on the note values. The music features a variety of articulations: 'pizz.' (pizzicato) is used at measures 52, 63, 69, 75, and 85; 'arco' (arco) is used at measures 63, 75, and 80; 'sim.' (simile) is used at measure 58. Dynamics include 'mf' (mezzo-forte) at measures 52, 58, 69, and 75; 'f' (forte) at measures 52, 63, 75, and 80; 'p' (piano) at measure 85; and 'pp' (pianissimo) at measure 85. A triplet of eighth notes is indicated at measure 85. The piece concludes with a double bar line at the end of measure 85.